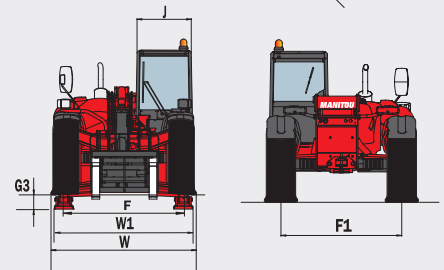
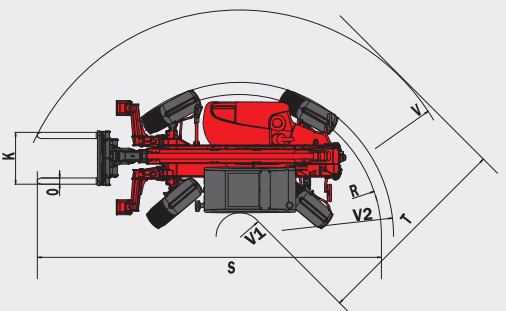
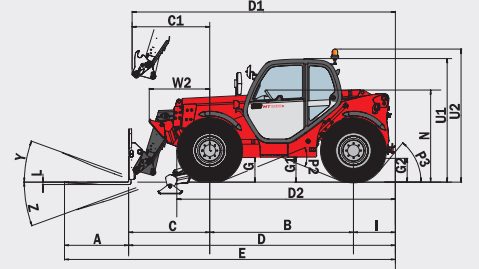
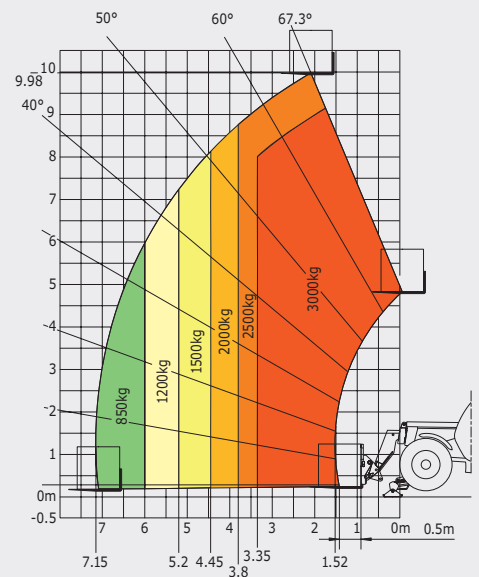


MT1030ST

Maximum height reach: 2.0 m

As per standard EN 1459 annex B



		MT 1030 ST
	Lifting capacity	3000 kg
	at 500 mm from forks heels	
	Break-out force (ISO 8313)	5330 daN
	Lifting height	9.98 m
	Time: laden/unladen (in secs)	
	Lifting	6.70/8.50
	Lowering	5.40/5.50
	Extension	13.60/13.60
	Retraction	8.70/8.40
	Dump	2.30
	Tyres	400/80-24 156A8 IND TL PCL
	Forks (mm)	
	Length x width x thickness	1200 x 125 x 45
	Braking	multiple-disk hydraulic brakes with oil bath on front and rear axles
	PERKINS STAGE III A Engine	1104D-44TA
	Cubic capacity	4 cyl. - 4400 cm ³
	Power at 2200 rpm (ISO/TR 14396)	101 HP / 74.5 kW
	Max. torque at 1400 rpm (ISO/TR 14396)	410 Nm
	Injection	direct
	Cooling	water
	Transmission	torque converter
	Gearbox	electro-hydraulic
	Number of gears (forward/reverse)	4/4
	Max. travel speed	25 kph*
	Hydraulics	
	Gear pump	105 l/min - 250 bar
	Capacities	
	Cooling system	18.50 l
	Engine oil	11 l
	Hydraulic oil	128 l
	Fuel	120 l
	Unladen weight (with forks)	7525 kg
	Width overall	2.26 m
	Height overall	2.30 m
	Length overall	4.99 m
	Turning radius (outer wheels)	3.75 m
	Ground clearance	0.45 m
	Drawbar pull	9100 daN
	Noise at driving position (LpA)	76 dB
	Environmental noise (LwA)	105 dB
	Vibration to whole hand/arm	<2.50 m/s ²
	Vibration on driver's body	1.015 m/s ²

A	1200	E	6191.9	J	865	S	7809.9	W1	2210
B	2690	F	1846	K	1040	T	3640	W2	1132
C	1512.9	F1	1846	L	45	U1	2300	Y	11.9°
C1	1602	G	455	N	1690	U2	2550	Z	113.7°
D	4991.9	G1	440	O	125	V	4950		
D1	5081	G2	440	P2	44°	V1	1310		
D2	4050	G3	220	P3	53°	V2	3752		
		I	789	R	3545	W	2260		

This brochure describes versions and configuration options for Manitou products which may be fitted with different equipment. The equipment described in this brochure may be standard, optional or not available depending on version. Manitou reserves the right to change the specifications shown and described at any time and without prior warning. The manufacturer is not liable for the specifications given. For more information, contact your Manitou dealer. Non-contractual document. Product descriptions may differ from actual products. List of specifications non-exhaustive. The logos and visual identity of the company are the property of Manitou and may not be used without authorisation. All rights reserved. The photos and diagrams contained in this brochure are provided for information only.

MANITOU BF SA - Limited company with board of directors - Share capital: 39,547,824 Euros - 857 802 508 RCS Nantes